

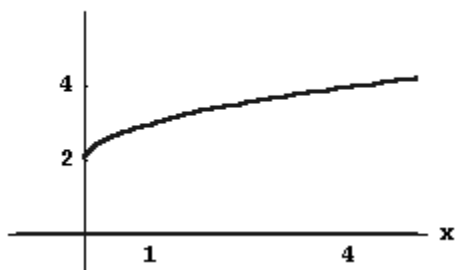
Topic 22: Graph transformations of basic shapes

Use transformations of the basic graphs to sketch the graph of each function. Label all asymptotes and intercepts.

1. $f(x) = \sqrt{x} + 2$ 2. $f(x) = 2|x-1|$ 3. $f(x) = \frac{1}{x+2} - 1$ 4. $f(x) = -x^3 + 1$

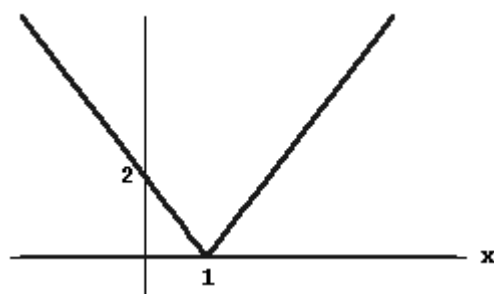
Answers

1. $f(x) = \sqrt{x} + 2$



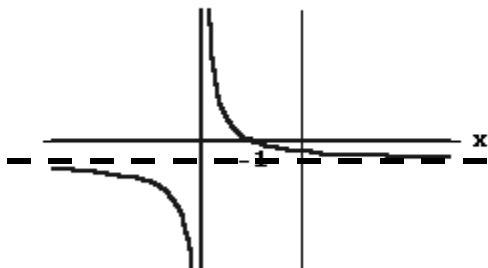
2.

$f(x) = 2|x-1|$



3.

$f(x) = \frac{1}{x+2} - 1$



Vertical Asymptote: $x = -2$
 Horizontal Asymptote: $y = -1$
 x-intercept: -1
 y-intercept: $-1/2$

$f(x) = -x^3 + 1$

