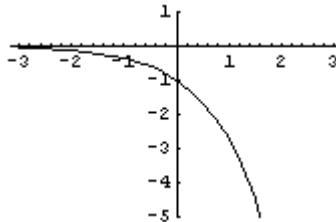


Topic 29: Graph exponential functions

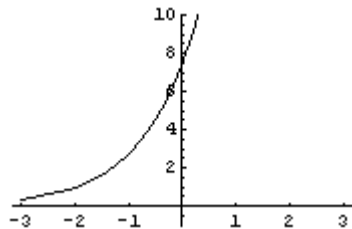
1. Sketch the graph of $f(x) = -e^x$ and label all asymptotes and intercepts.
2. Sketch the graph of $f(x) = e^{x+2}$ and label all asymptotes and intercepts.
3. What is y-intercept of $f(x) = e^x - 1$?
4. What is the equation of the horizontal asymptote for $f(x) = e^{x+1} - 4$?

Answers

1. y-intercept is -1. Horizontal asymptote is $y=0$.



2. y-intercept is $e^2 \approx 7.4$. Horizontal asymptote is $y=0$.



3. $y=0$, the point is $(0,0)$.
4. $y = -4$