

Topic 30: Graph log functions

Sketch the graph of each function and label the intercepts and asymptote.

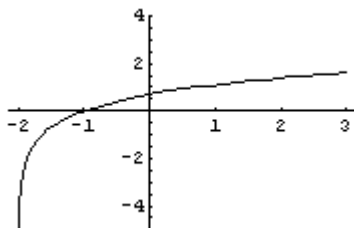
1. $f(x) = \ln(x + 2)$

2. $f(x) = \log_3(x + 3)$

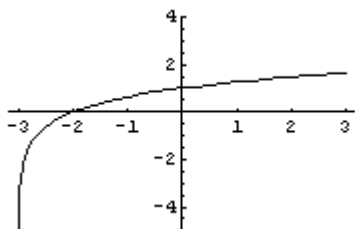
3. $f(x) = \log(2 - x)$

Answers

1. Vertical Asymptote is $x = -2$. x-intercept is $x = -1$. y-intercept is $\ln 2$.



2. Vertical Asymptote is $x = -3$. x-intercept is $x = -2$. y-intercept is 1.



3. Vertical Asymptote is $x = 2$. x-intercept is $x = 1$. y-intercept is $\log 2$.

