

From New Orleans:

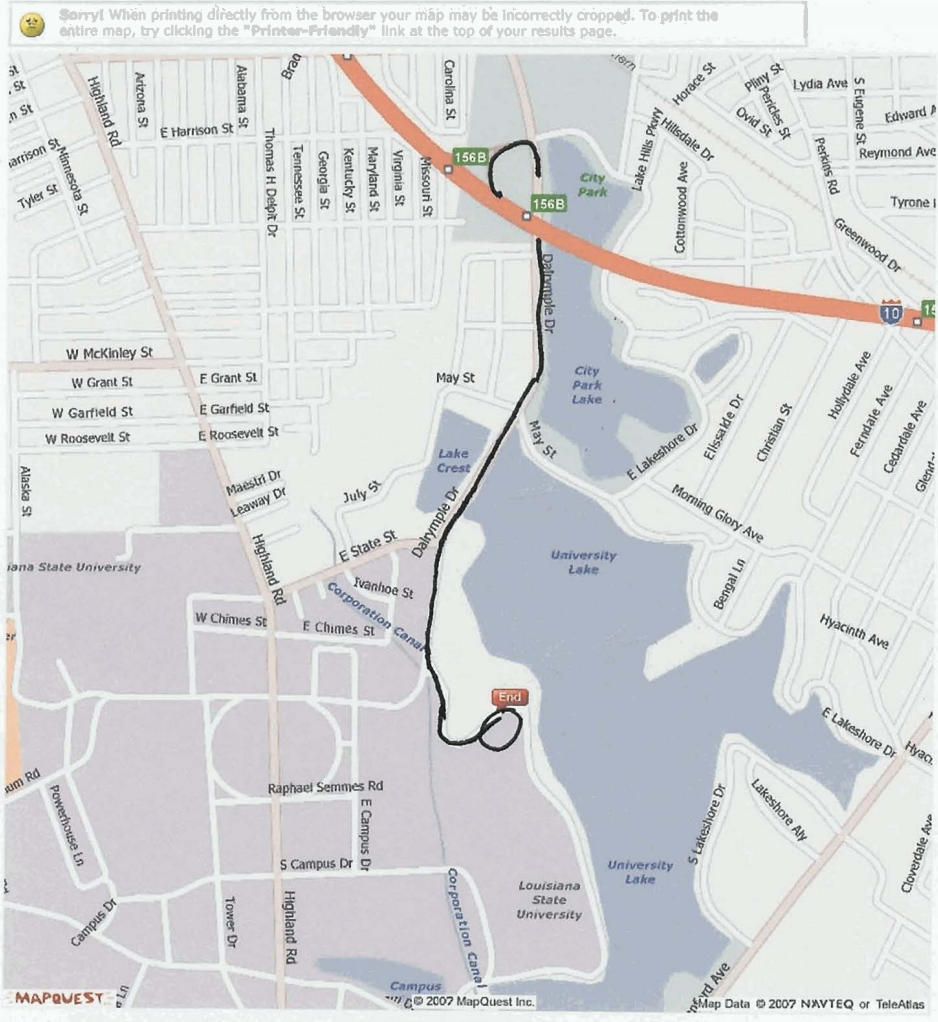
1. Turn West on on Airline (or US-61). Leaving the airport, this is to the **right**.
2. Stay on the right lane on US-61 for about **3.2 miles** or until you hit I-310. You will see the sign pointing towards Baton Rouge. Note that the exit splits, you stay to to the right. After driving on the I-310 for about 2.7 miles, the interstate splits. You take the left lane that merges into I-10 west, towards Baton Rouge.
3. You stay on I-10 west for about 64-70 miles. Note, as you arrive in Baton Rouge you will see I-12 meet I-10 on your right hand side. Stay on the **third** lane counted from left to right. The two lines furthest right will have to exit. The first one on College and the next on Acadian. At Acadian you will see a sign towards LSU. **Ignore it!**
4. Take the next exit after Acadian. This is **Dalrymple Dr.** The easiest way to remember the exit is that you will cross the City Park Lake just before the exit.
5. As you hit Dalrymple Dr. take a **right** turn. You stay on Dalrymple for just under a mile. Take a **left** turn into West Lakeshore Drive. Note the **International Student House** on your left just before the intersection. Another way to remember the intersection is that after driving on Dalrymple for about 0.5-0.6 miles there is a light at the intersection Dalrymple and East State St. West. Lakeshore Drive is the next street to the left after the light.
6. You will then soon see the hotel on your right.

Sorry! When printing directly from the browser your map may be incorrectly cropped. To print the entire map, try clicking the "Printer-Friendly" link at the top of your results page.



All rights reserved. Use Subject to License/Copyright
These directions are informational only. No representation is made or warranty given as to their content, road conditions or route usability or expeditiousness. User assumes all risk of use. MapQuest and its suppliers assume no responsibility for any loss or delay resulting from such use.

Getting from the Airport to I-10



All rights reserved. Use Subject to License/Copyright

These directions are informational only. No representation is made or warranty given as to their content, road conditions or route usability or expeditiousness. User assumes all risk of use. MapQuest and its suppliers assume no responsibility for any loss or delay resulting from such use.

I-10 to Cook